

LCD attached Digital Microscope

Digital Microscope with flexible snake light that makes it possible to find all scratch on the material.

Magnification
X4~43

4.3 inch
Monitor

100 Pixel

Animation/Still
Film&Save

X200 larger
on Type 20 PC!

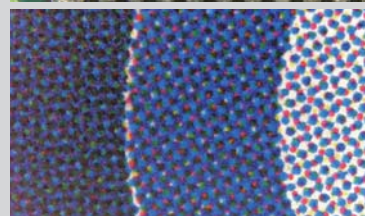
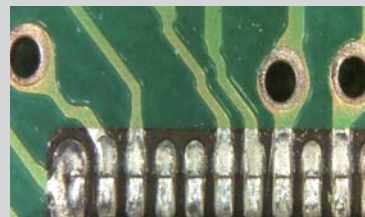


Observing objects on Screen, not from Scope!

LCD monitor attached Digital Microscope with two snake light makes less reflection when observing reflective objects such as metal. Magnification x4~43 on attached monitor, x200 on Type 20 PC. Its size and attached LCD makes it possible to save space and to observe easily.

User
Guide

Blade/Circuit Board/Print Material
Fiber/Plant/Metal Observation
Scratches/Rag/Foreign matter inspection



Feature

Still/Animation Filming



Able to film still/animation images. Maximum 4032x3024 size available for still image. The data will be saved in Micro SD card so you can check it anytime.

Brightness adjustable each



Brightness could be adjusted separately. In addition, snake light could adjust its angle and on/off the light so make good use of them to observe.

Clear images are guaranteed



The size of monitor is 4.3 inch which is larger than other brands and can be used as display during EXPO event.

Remote controller & Stand attached



Anti-shake remote controller

Anti-shake remote controller attached. Shutter button, digital zoom button, and snapshot button are on it.



Slushing suppressing holder

Metal-made holder can hold the scope and make it stable. Of course you could use the scope without the holder.

Attachment



- Digital Microscope
- Stand
- Controller
- USB cable
- AC adaptor
- Remote controller
- Filter
- Filter sticker
- Micro SD card
- Manual

Spec

Camera	1/4 CMOS	Digital zoom	Maximum x100
Pixel	1 million pixel	Storage	MicroSD card (Max 32G)
Movie size	Max 1080P/30fps(AVI)	Power	DC5V/2A
Magnification	x4~43 (4.3 inch monitor) ※x200 on Type 20 PC	Light sources	White LEDx8
Still image size	Max 4032x3024 (JPG)	Monitor size	4.3 inch
Effective distance	20~105mm*Holder upper limit	Size	Scope: 182x120x60mm Stand: 190x162x100mm
Focus	Manual	Resolution	480x272

