

ENGINEER[®]

MADE IN JAPAN

1RoHS
Compliant

NEW

RAPID SCREW EXTRACTOR

DBZ-60G

2-in-1 Bit Set **PATENT.P**



High-torque handle grip



2nd Bit

Shock-absorbable
rubber sleeve

APPLICATIONS



Countersunk



Round Head



Dome Head

No
Power
Required



No
Drilling
Required

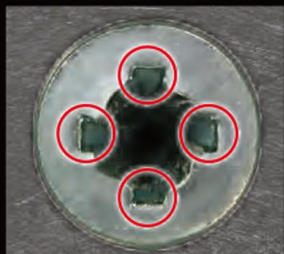


No
Hammer
Required



(1st Bit only)

1st Bit - Press & Twist !!



4 edges of the cross
tip can firmly grip the
remaining corners
of Phillips recess.

2nd Bit - Strike & Turn !!



Sharp and durable
blade can stick into
the screw recess
easily for secure grip.

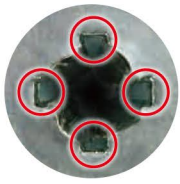
Stripped Screw Removal – How to

1st Bit - Press & Twist!!



DBZ-51

Phillips screw #2



Slightly Damaged



Scrape away burs in the screw recess.



Give a jerk counterclockwise while pressing downward.

2nd Bit - Strike & Turn!!

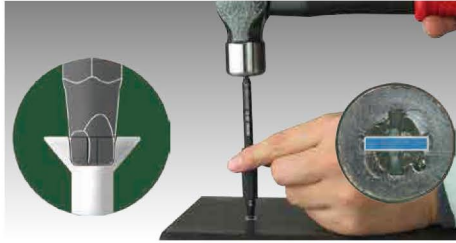
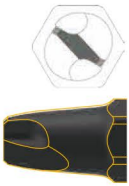


DBZ-52

Phillips screw #2



Heavily damaged or failure with the 1st Bit.

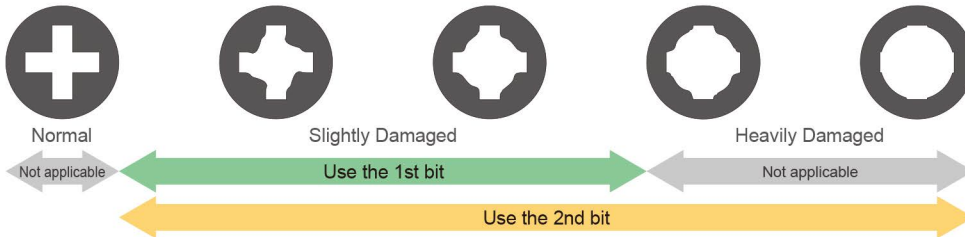


- Strike the end of the bit with a hammer to stick the blade into the recess.
- Then, affix the grip onto the bit.



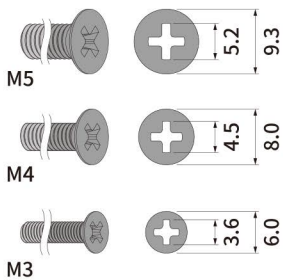
Give a jerk counterclockwise while pressing downward.

Applications

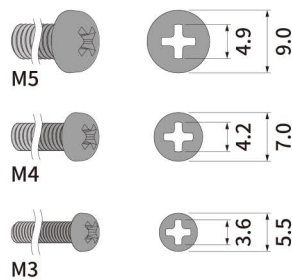


Screw Size

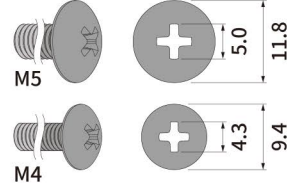
Countersunk Screw



Round Head Screw



Dome Head Screw



DBZ-60G is applicable to Phillips screw #2



- Material
 - Bit : Carbon Steel
 - Sleeve : Elastmer (TPR)
 - Handle Grip : ABS, Nylon

- Contents
 - Bit (DBZ-51 & DBZ-52)
 - Shock-absorbable rubber sleeve
 - High-torque handle grip (W:100mm)



Product Page
<http://goo.gl/nfQUvm>

Rapid Screw Extractor

Model	Weight
DBZ-60G	135g

Replacement Bit

Model	Screw Size	Length	Weight
DBZ-51	Phillips screw #2	105mm	27g
DBZ-52			

Optional Bit

Model	Screw Size	Length	Weight
DBZ-53	Hex socket screw (Across flats:2.5 & 3.0mm)	105mm	26g

Manufacturer

ENGINEER INC.

2-8-9 Higashi-Imazato, Higashinari-ku
 Osaka 537-0011, Japan
 ☎(81)6-6974-0028 FAX(81)6-6974-5661

URL <http://www.engineer.jp>

